

# Kokanee EDMONTON Canada Cup



Saturday July 23rd, 2011  
Kinsmen Park, Edmonton AB



## Mountain Bike Race

[www.edmontoncanadacup.com](http://www.edmontoncanadacup.com)



## About the Race

The Kokanee Edmonton Canada Cup Mountain Bike race will take place in the middle of Edmonton in the beautiful River Valley. With the Remax Bike Expo and screaming fast single track there is sure to be a buzz in the air. The Provincial Legislature Building and University of Alberta campus set the scene along the edge of the North Saskatchewan River. Accommodations are nearby and the beer gardens will be rockin'! That's right, we said beer gardens!

## About the Organizer

Alberta MTB Racing strives to provide fun, well-organized, and super-duper races. We try to ensure that all riders of **ALL** abilities enjoy the highest degree of safety, fairness, and the spirit of competition. We are a small group of cyclists and racers who saw a need for quality mountain bike races in Alberta and together we stepped up and now provide well organized, super fun Mountain Bike Race experiences. We are very proud to bring the Canada Cup MTB Series to our hometown of Edmonton.

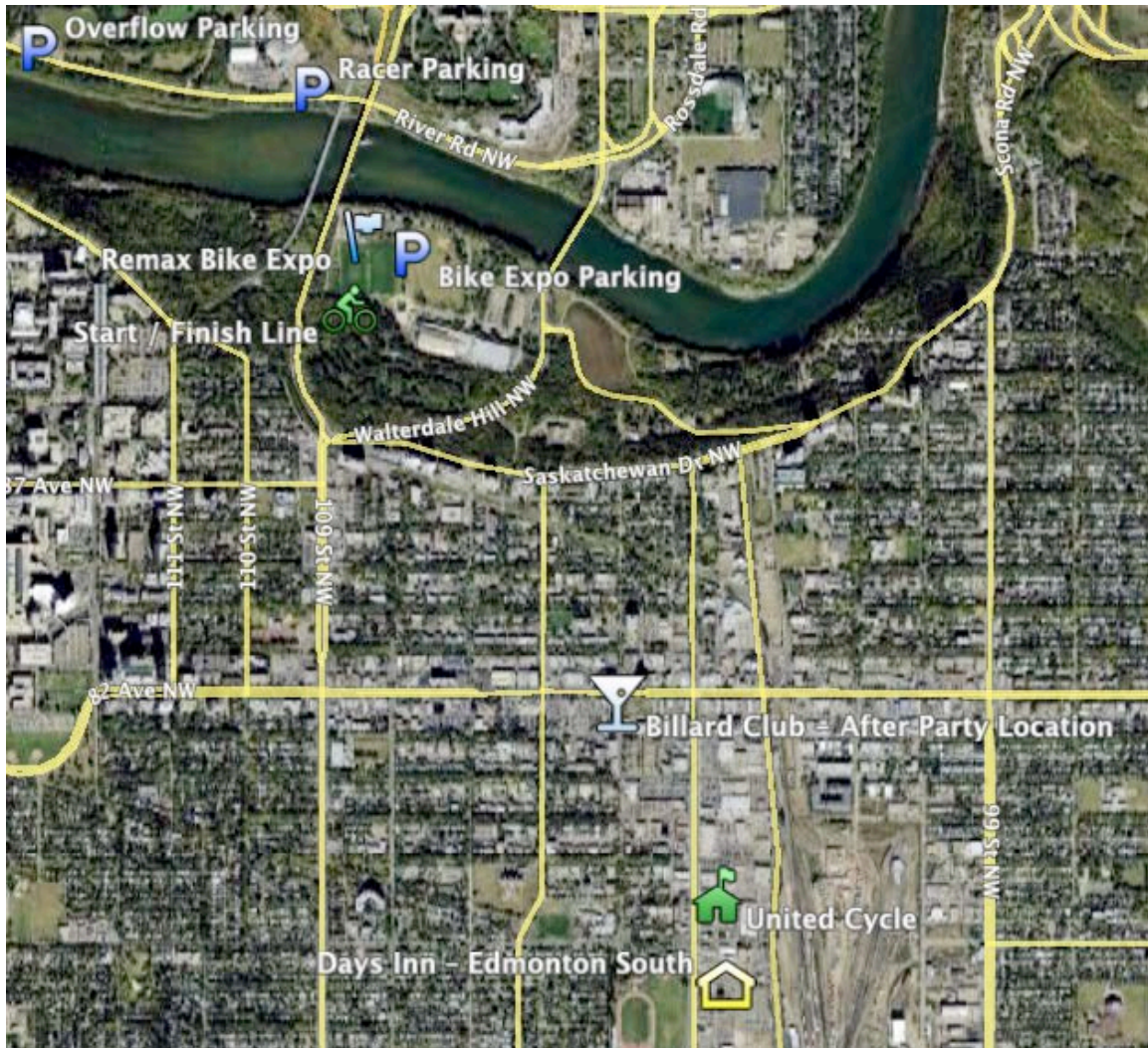


## Locations to Know

**Registration and Sign On:** United Cycle (10323-78 Avenue, On Gateway Blvd)

**Manager's Meeting:** United Cycle (10323-78 Avenue, On Gateway Blvd)

**Race Venue:** Kinsmen Park (9100 Walterdale Hill)



## Accommodations

We have secured all athletes a discount for accommodation at the Days Inn Edmonton South. A special group rate of \$109.99 plus taxes per night includes all the amenities featured below. Best of all, the Days Inn Edmonton South is within walking distance to United Cycle (site of registration and our Elite Sponsor). Plus the hotel is only a 5 minute bike ride to the Edmonton Canada Cup race course.

Days Inn Edmonton South  
780-430-0011  
10333 University Avenue NW  
Edmonton, AB T6E 6N3  
[www.daysinn.com](http://www.daysinn.com)

Group Name: Edmonton Mountain Bike Canada Cup

### Hotel Amenities:

- 100% non-smoking environment
- Day break Cafe featuring a hot breakfast sandwich
- Fitness centre with whirlpool
- Business Centre
- Free parking

### Classic Guest room amenities:

- 2 Queen beds
- Mini-fridges, microwaves & Coffee Makers
- High-speed internet access
- Free local calls



## Sign On & Number Plate Pickup

All racers must sign-on Friday July 22<sup>nd</sup> during the following times at **United Cycle**. Licensed racers must bring their race license with photo ID. If you don't sign on you will not be able to race. Number plates and body numbers will be handed out at sign-on.

	Sign-On Begins	Sign-On Ends
Friday	3:00 pm	9:00 pm

## Fees & How to Register

Online Registration: Karelo -

<http://www.karelo.com/register.php?BID=330&BT=10 - Ev1044>

Early Registration Draw Prize

For 2011, Alberta MTB Racing is stepping it up and we will be offering multiple early bird registration draw prizes. Refer to our new website [www.edmontoncanadacup.com](http://www.edmontoncanadacup.com) for all the up to the minute details of these draws!

There will be no day-of registrations for Junior and U23/Elite categories. For these Junior and U23/Elite categories, registration will close Thursday July 21<sup>st</sup> - 2 days before race day (ex: Thursday if the race is Saturday). Past that deadline, a fine of 50\$ CDN will be charged on top of the registration fee, in accordance with the CCA Canada Cup policy. **THIS IS FOR JUNIOR & ELITE CATEGORIES ONLY.**

**REGISTRATION CLOSES FOR ELITE/U23 AND JUNIOR EXPERT CATEGORIES AT 9 PM ON THURSDAY, JULY 21<sup>st</sup>, 2011.**

In-person Registration: United Cycle - July 22<sup>nd</sup> during sign on times only; CASH only.



## Fees:

Category	Online & In Person
Elite / U23	\$59.99
Youth Categories	\$34.99
Teams	\$59.99
All Others	\$49.99

Online registration closes at 9PM on Friday July 22<sup>nd</sup>, 2011.

In person registration (Cash Only) for Non-Elite and Non-Junior Expert closes at United Cycle at 9:00 pm on Friday July 22<sup>nd</sup>, 2011.

Remember if you register online you MUST still sign in – in person at United Cycle between 3pm & 9pm. If special arrangements are required, please email us at [hello@edmontoncanadacup.com](mailto:hello@edmontoncanadacup.com).

## REGISTRATION INSTRUCTIONS:

Elite / U23 are to register in the ELITE Category.

Non-Elite licensed racers: please enter your appropriate category as per your ABA license (Expert, Sport, or Novice).

Non-licensed racers are to enter "CITIZEN" in the UCI Code field and enter in the NOVICE category. You will also be required to purchase a Day License for a fee of \$10 so please check the appropriate tick box.

The MASTER EXPERT categories are open to riders who are 30+ and are categorized as EXPERT on their ABA License.

Elite ability racers holding a Masters Licence cannot compete in the ELITE Category.



YOUTH Categories are age defined: <17 yrs old. Out of province ability racers please contact us to confirm your race category [hello@edmontoncanadacup.com](mailto:hello@edmontoncanadacup.com).

Your UCI Code can be found on your race license, if you are non-licensed and plan to compete by purchasing a day license, please enter "CITIZEN" in the UCI Code field.

If Elite or Junior Expert miss the registration deadline of 9pm on Thursday July 21<sup>st</sup>, 2011 and still wish to register, they may do so in person at United Cycle after paying a \$50 late registration penalty directly to the CCA.

All Fees are non-refundable.

There is NO RACE DAY REGISTRATION.

ELITES & JUNIOR EXPERTS - Registration closes on Thursday July 21<sup>st</sup>, 2011 at 9 pm. All other categories - registration closes Friday July 22<sup>nd</sup> 2011 at 9pm. (Must be signed in @ United Cycle by 9pm on Friday July 22<sup>nd</sup>, 2011).



## Licensing

A blurb about licensing:

If you do not have a racing license, Day licenses are available at a price of \$10. A Day License may be purchased from the ABA Technical Director in person at United Cycle during the sign on times only. Non-licensed racers are to enter "CITIZEN" in the UCI Code field and enter in the NOVICE category. Remember if you do not have a license you will be required to purchase a Day License for a fee of \$10 so please check the appropriate tick box when registering on Karelo.com.

Alberta MTB Racing has purchased special event insurance for this race so registration is open to both members and non-members of affiliated cycling clubs.

You can call the ABA toll free 1-877-646-2453 or 1-780-427-6352 during regular business hours for any further licensing questions.

## Parking

Please follow the parking guidelines and parking volunteer instructions.

There will be limited parking near the tennis courts, in the Remax Bike Expo area. These limited spots are first come first serve. Please do not park in the reserved parking that we have designated for volunteers, staff, & Remax Bike Expo vendors. The 2<sup>nd</sup> most convenient parking is across the river, in the Royal Glenora overflow parking. It's a quick trip across the LRT bridge bikepath to get to the race venue. There is also additional parking available as shown in parking lots #3 and #4 (both about a 5 min. bike ride away). **Do not drive into the Kinsmen venue area after 10am as racers are not permitted to park in the main Kinsmen parking lot.** See map above for locations.



## Food & Water

Racers need to be self sufficient. Food and drinks will be available for racers after their race. Fill your bottles before you come to the race!

## Bike & Equipment

You must wear an approved bike helmet. Your bike must be in good, safe working condition. Please remove carrier racks, etc. Please bring your own repair equipment, spare tubes, pumps, etc. Your bike may be inspected prior to the race.

## Feed / Technical Assistance (Mechanical) Zone

There will be two feedzone locations:

Feed zone #1 – Located directly after the start / finish – Access via Tech Expo area.

Feed zone #2 – Far East corner of the course – access via ‘Old Timers Parking’ lot using 99<sup>th</sup> Street.

UCI & Provincial Teams will be issued 2 feed / tech passes per feed zone for every 4 riders. Passes will be distributed at the manager’s meeting. Maximum of two people per racer will be allowed to provide – food, water, and eyewear only.

A mechanical zone will be designated for equipment that racers may need during the event. Racers must use the same frame for the duration of the event. Please clearly label all equipment in the mechanical zone to avoid confusion.



## Team Relay Event

Two to four people may enter as a team. Team members will race one at a time and complete a total of four laps. Team racers must lap through the team transition area and “high five” the next teammate going out on the course.

There are three team categories: Men, Women, and Mixed.

## Managers Meeting

The managers meeting is a non-mandatory meeting for team managers and racers to clarify race day proceedings.

**Where:** United Cycle

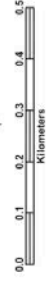
**When:** Friday, July 22<sup>nd</sup>, 2011 @ 7pm

## Course Map

All the fancy GPS details of the 7.26 km course can be viewed here:

<http://connect.garmin.com/activity/5322019>





Canada Cup Mountain Bike Race Course  
Edmonton Alberta June 13, 2009



## Racers Responsibilities

All racers of all categories are responsible for knowing how many laps must be completed for their respective category. The Commissaire will advise of any lap changes on the start line.

In addition, ability categories may be combined at the start.

It is the Racers' responsibility to know how many laps to complete.

If a competitor crosses the finish line before completed all designated laps, they will be automatically disqualified and the results will show DSQ.

## Shower / Locker Room Facilities

Access will be provided to the Kinsmen Field House Locker Rooms & Showers for all athletes. Please enter the field house through the east entrance (NOT up the big stairs). You will need to show your body number or number plate to gain free admission into the facility.

Be sure to bring a lock as you will have the opportunity to lock your valuables in a locker in the Field House. As you may guess, the Kinsmen Field House, nor Alberta MTB Racing are responsible for any of your belongs locked away. Use the locker room facilities at your own risk.

Bikes will not be allowed inside the Field House. Although the east entrance will be supervised, we are not responsible for your bicycle while you are inside.

This great service to you the athlete is provided by Alberta MTB Racing.



## Start Times & Distances

Start Time	Category	Laps
10:00	Master Expert Men	4
10:01	Expert Men	4
10:02	Master Expert Men 40+	3
10:03	Sport Men	3
10:04	Novice Men	2
10:05	Master Expert Women	3
10:06	Expert Women	3
10:07	Sport Women	2
10:08	Novice Women	2
10:09	TEAM RELAY	4
10:09	Youth Sport Men	2
10:10	Youth Novice Men	1 or 2 TBA
10:11	Youth Sport Women	1 or 2 TBA
10:12	Youth Novice Women	1 or 2 TBA
12:00	Canadian Single Speed Championships	3
12:15	Kids Race (Kids Course)	2
14:30	Elite Men	5
14:31	Elite Women	4
14:36	Junior Expert Men	4
14:37	Junior Expert Women	3

\*All lap counts are subject to change, mainly for weather reasons



The final number of laps will be confirmed by the start Commissaire during immediate pre-race instruction.

The # of laps have been determined by the recent change to the UCI MTB Regulations & consideration to 2010 Edmonton Canada Cup finishing times:

### Cross-country Olympic - XCO

Rule 4.2.001. The duration of cross-country Olympic format races must lie within the following ranges or as close as possible to them (in hours and minutes).

	Minimum (hrs.)	Maximum (hrs.)
Junior Men	1.00	1.15
Junior Women	1.00	1.15
U23 Men	1.15	1.30
U23 Women	1.15	1.30
Elite Men	1.30	1.45
Elite Women	1.30	1.45
Master Men	1.15	1.30
Master Women	1.15	1.30



## Schedule

Day	Time	Details
Wednesday July 20, 2011	08:00 – 20:00	Preliminary Marked Course Open for Training
Thursday July 21, 2011	08:00 – 20:00	Preliminary Marked Course Open for Training
	21:00	Online Registration Closes
Friday July 22, 2011	07:00 – 12:00	Course Closed
	12:00 – 20:00	Course Open for Training
	15:00 – 21:00	Registration & Plate Pick Up (Location – United Cycle)
	19:00 – 20:00	Manager's Meeting @ Days Inn Edmonton South
	21:00	In person registration closes
Saturday July 23, 2011	08:00 – 9:30	Course Open for Training
	9:45	Edmonton Canada Cup Ability Category Call Up
	10:00 – 12:00	Edmonton Canada Cup Ability Category Race
	12:00 – 14:00	Edmonton Canada Cup Kids Race and Canadian Single Speed Championships
	14:15	Elite & Junior Expert Call Up
	14:30 – 16:30	Edmonton Canada Cup Race
	17:00	Awards & Draw Prizes for All Categories



## Course Training Rules

Please be advised that we do not have exclusive use of the Edmonton River Valley for training on the course, so riders must yield to walkers, inline skaters, and other park users. Failure to do so may result in sanctions.

Riders must have their racing plate on their bike during the designated training on Saturday (12:00 – 20:00).

## Prizing

Prize money will be awarded as per UCI C2 Race Regulations.

Prize Money Purse – 1 Day Race (C2)

Level	WJ/MJ	WE	ME
UCI 2	250 Euro	930 Euro	1415 Euro

All categories are eligible for Draw Prizes, which will be held during the Awards Ceremony.

The event for the Elite men and women is organized under the regulations of the International Cycling Union (UCI)

It is a Class 2 (C2) Cross-Country Olympic (XCO) event.

The event is awarding UCI Mountain bike classification points for both the elite men and women as followed:

Place	1 <sup>st</sup>	2 <sup>nd</sup>	3 <sup>rd</sup>	4 <sup>th</sup>	5 <sup>th</sup>	6 <sup>th</sup>	7 <sup>th</sup>	8 <sup>th</sup>	9 <sup>th</sup>	10 <sup>th</sup>
Points	30	20	15	12	10	8	6	4	2	1



## Commissaires panel for the UCI Races:

President: Louise LALONDE  
Assistant to the president: Gary LUSTIG  
Secretary: Kevin MACCUISH

## Hospital

University of Alberta Hospital  
8440 – 112 Street  
Edmonton, AB  
T6G 2B7  
780-407-8822



**Title Sponsor & Official Beer**



**Elite Sponsor & Bike Shop**



**Bike Expo Sponsor**



## Expert Level Sponsors



Official vehicle partner



Official bike partner



## Official Timing Partner



## Official Hotel Partner



## Sport Level Sponsors

**MCCALLUM**  
PRINTING GROUP INC.

**bikeridr**

**ATCO Gas**



## Contact Info:

If you have any questions or comments about this technical guide please contact:

Mike Sarnecki  
Race Director  
Edmonton, AB  
Phone: 780.708.4521  
mike@edmontoncanadacup.com  
[www.edmontoncanadacup.com](http://www.edmontoncanadacup.com)

Evan Sherman  
Race Director  
Edmonton, AB  
Phone: 780.289.9477  
evan@edmontoncanadacup.com  
[www.edmontoncanadacup.com](http://www.edmontoncanadacup.com)

Tim Harris  
Race Services Director  
Edmonton, AB  
Phone: 780.983.9835  
tim@edmontoncanadacup.com  
[www.edmontoncanadacup.com](http://www.edmontoncanadacup.com)

Kirk Hamilton  
Expo Coordinator  
Edmonton, AB  
Phone: 780.908.6877  
kirk@edmontoncanadacup.com  
[www.edmontoncanadacup.com](http://www.edmontoncanadacup.com)



# Notes



Vehicle Rentals | Sales | Leasing

